

# 水神

Suijin Investments Ltd

**ENQUIRES**

[www.suijin.co.uk](http://www.suijin.co.uk)

[info@suijin.co.uk](mailto:info@suijin.co.uk)



PRODUCT CODE

**S98**

## TECHNICAL DATA SHEET

# SUIJIN VOLUMISER 1.70L/MIN

### FEATURES

- Water saving 1.70 l/min flow rate
- Dual threaded design makes for easy installation
- Spray stream reduces splash
- Domed inlet screen for maximum volumiser life
- Easy installation
- Pressure angle compensating for an even spray
- Conforms to WRAS, NSF, KTW, W270

### BENEFITS

- Saves 70% water compared to an 'A' rated aerator
- Simple to fit

### KEY FACTS

**Pressure range**

1 bar - 6 bar

**Volumised flow rate @ 3 bar**

1.7 ltr+ - 0.05 l/min

**Dimension of the insert**

Standard aerator size  
(compatible with STD M22  
and M24 housings)

**Operating medium**

Drinking water

**Colour**

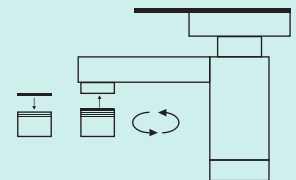
Grey

**Material**

POM

### EASY INSTALLATION TO FIT COMMON M22 & M24 HOUSING

1. Remove old aerator from faucet. Use wrench if necessary.
2. Remove any old washers that might be caught inside the spout.
3. Clean the threads inside the spout by hand.
4. Install the new Suijin Volumiser onto the spout by hand.
5. Turn on Faucet. If leak occurs, tighten more firmly.



For female faucets with inside threads

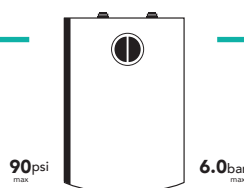
### APPLICATION AREAS



Drinking  
water only



Hand  
wash

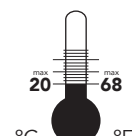


90psi  
max

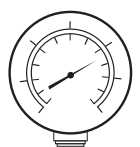
6.0bar  
max

Suitable for pressureless  
water heaters

### OPERATING CONDITIONS



Continuous



Continuous

**SAVES OVER 70% WATER • SAVES MONEY • SAVES ENERGY**